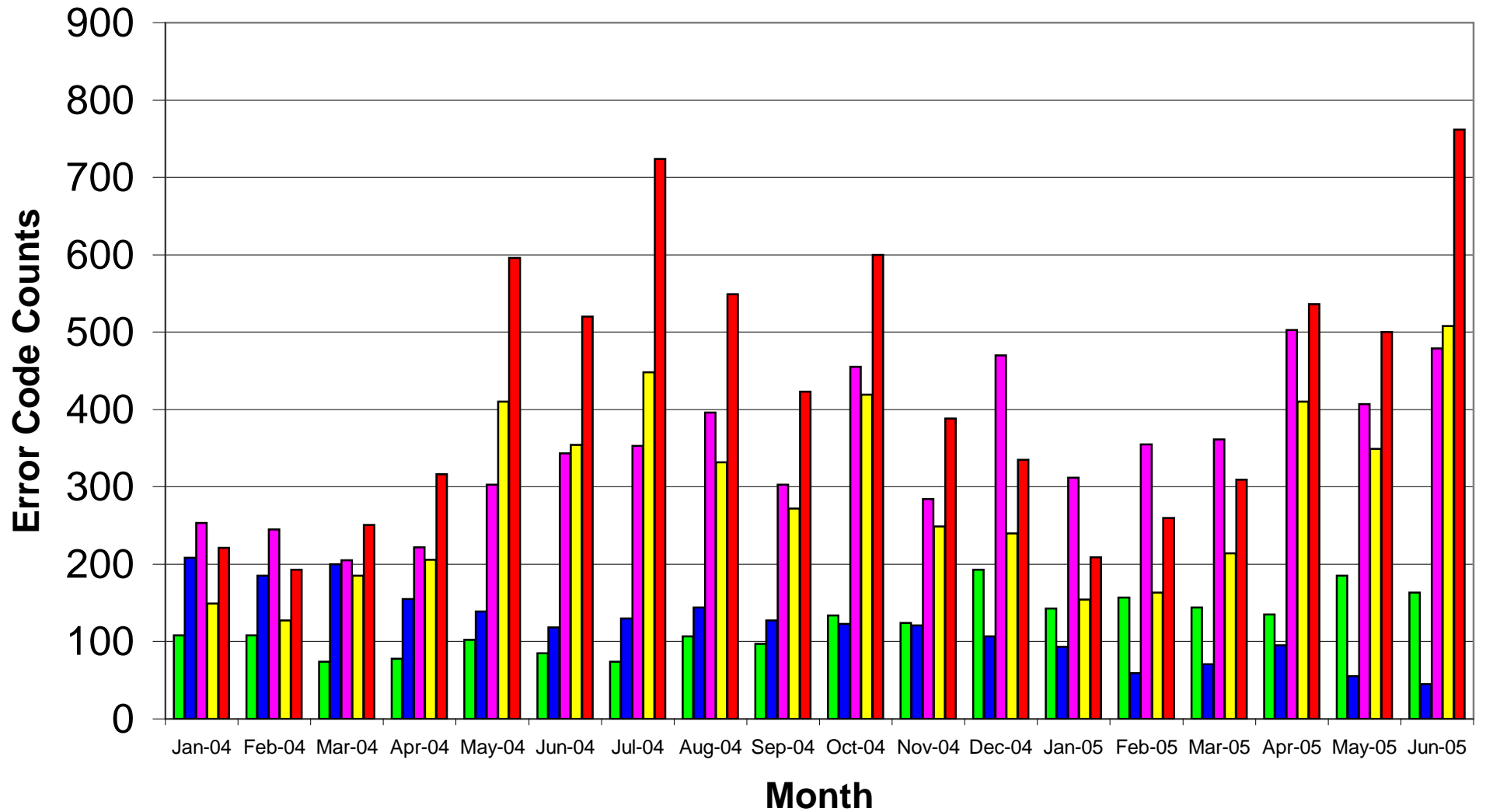


Monthly Summary of MTR Error Codes Included in Externally Issued MTRs - Top 5 Categories Only



■ 22 - COMMUNICATION - I/O Timeout
 ■ 26 - COMMUNICATION - Security Error
 ■ 27 - COMMUNICATION - Call Not Answered
■ G05 - VALIDATION - Power Outage Interval Tolerance
 ■ I01 - VALIDATION - Power Outage