

# Pricing Events – June 2007

July 19, 2007

MPWG



## Agenda

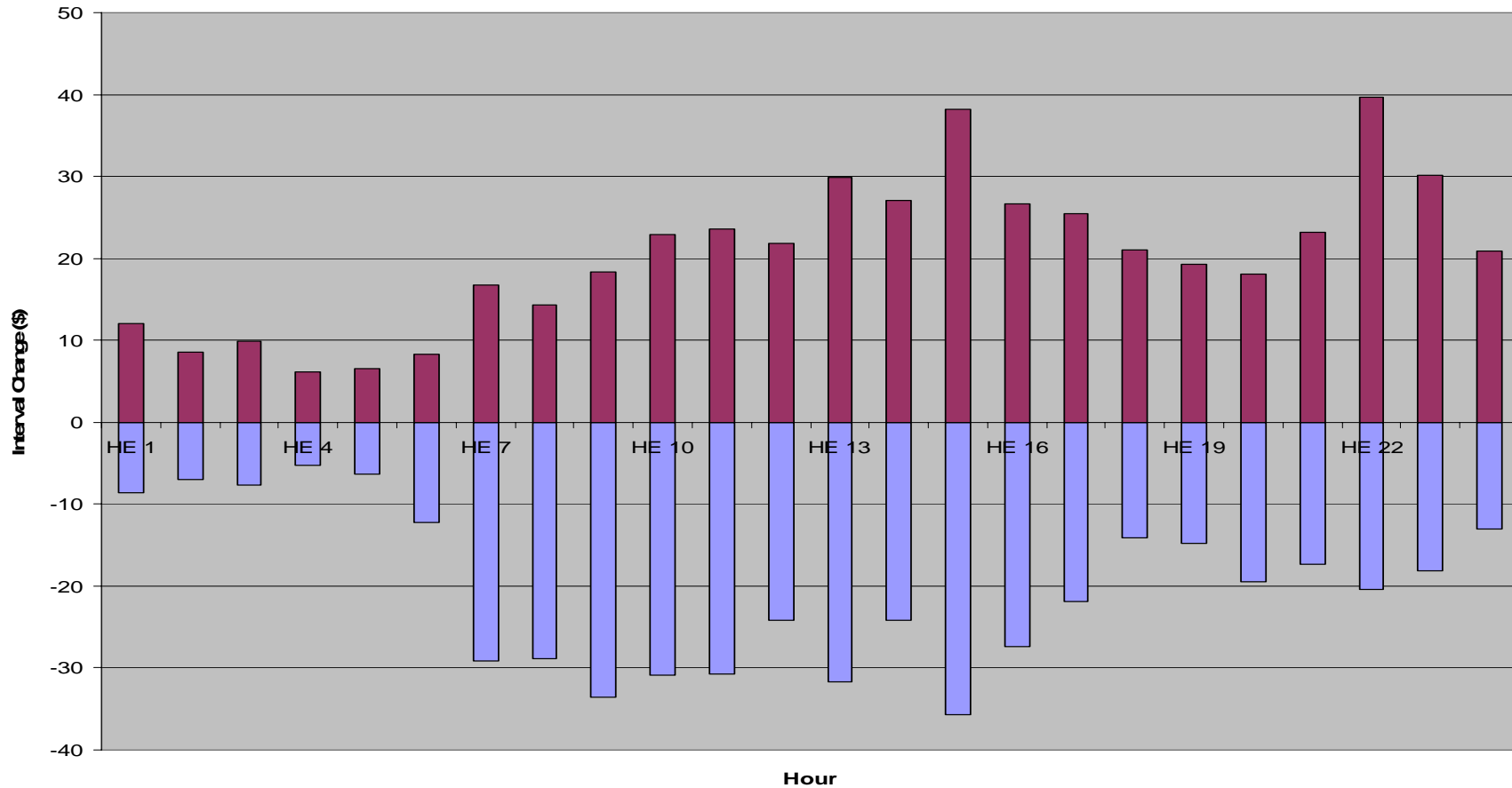
1. Overview
2. Detail Discussion
  - High-price hours
  - Low-price hours
  - MCP Volatility
  - Operating reserve activations
  - Emergency control actions
  - Market demand response programs
3. Wrap Up

- June Summary
  - Average Hourly Market Demand: 18,988 MW
  - Average Hourly Ontario Demand: 17,628 MW
  - Average HOEP: \$ 44.38
- Highlights
  - June 26 HE 16 - Highest 2007 Hourly Ontario Demand (25,737MW) and Highest 2007 Hourly Market Demand (26,658MW)
  - Power Advisory for GTA June 26 and 27

- There were 2 hours in June where the HOEP was above \$200
  - June 8 HE 12 – HOEP \$204.72
    - Load was approximately 1000MW above forecast levels
  - June 12 HE 15 – HOEP \$436.53
    - Load was approximately 600MW above forecast levels
    - Dispatchable consumers were constrained down for adequacy
      - Approximately 270 MW total

- There were 67 hours in June where the HOEP was below \$20
  - The 67 hours in June were spread over 14 days
  - There were 7 peak hours where the HOEP was below \$20
  - The lowest HOEP was \$3.81 and the average of these 67 HOEP values was \$13.06

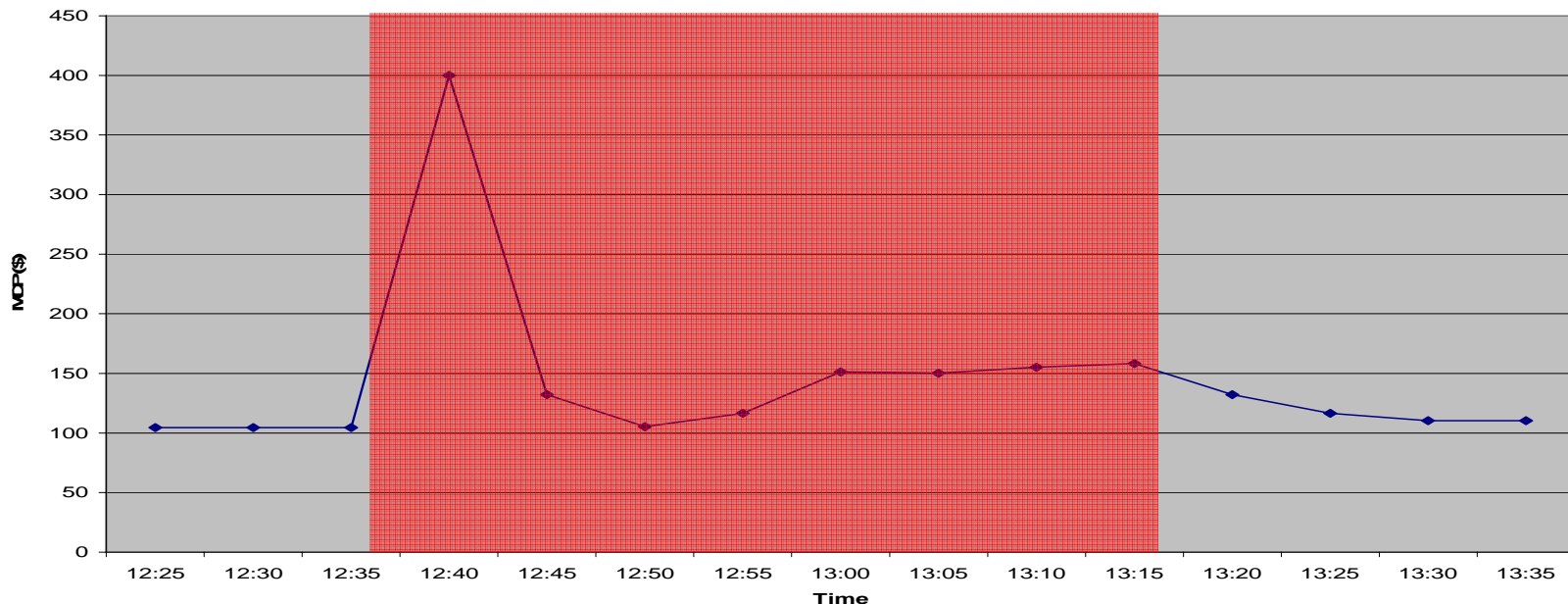
**June Bounds**



- In June 2007 there were 275 interval to interval changes that fell outside bounds of the benchmark
- This represented 3.08% of total number of intervals for the month, indicating this month experienced volatility inline with historic values
- Historic values against the new benchmark:
  - January 2007 – 2.65%
  - February 2007 – 5.72%
  - March 2007 – 5.98%
  - April 2007 – 6.21%
  - May 2007 – 3.22%

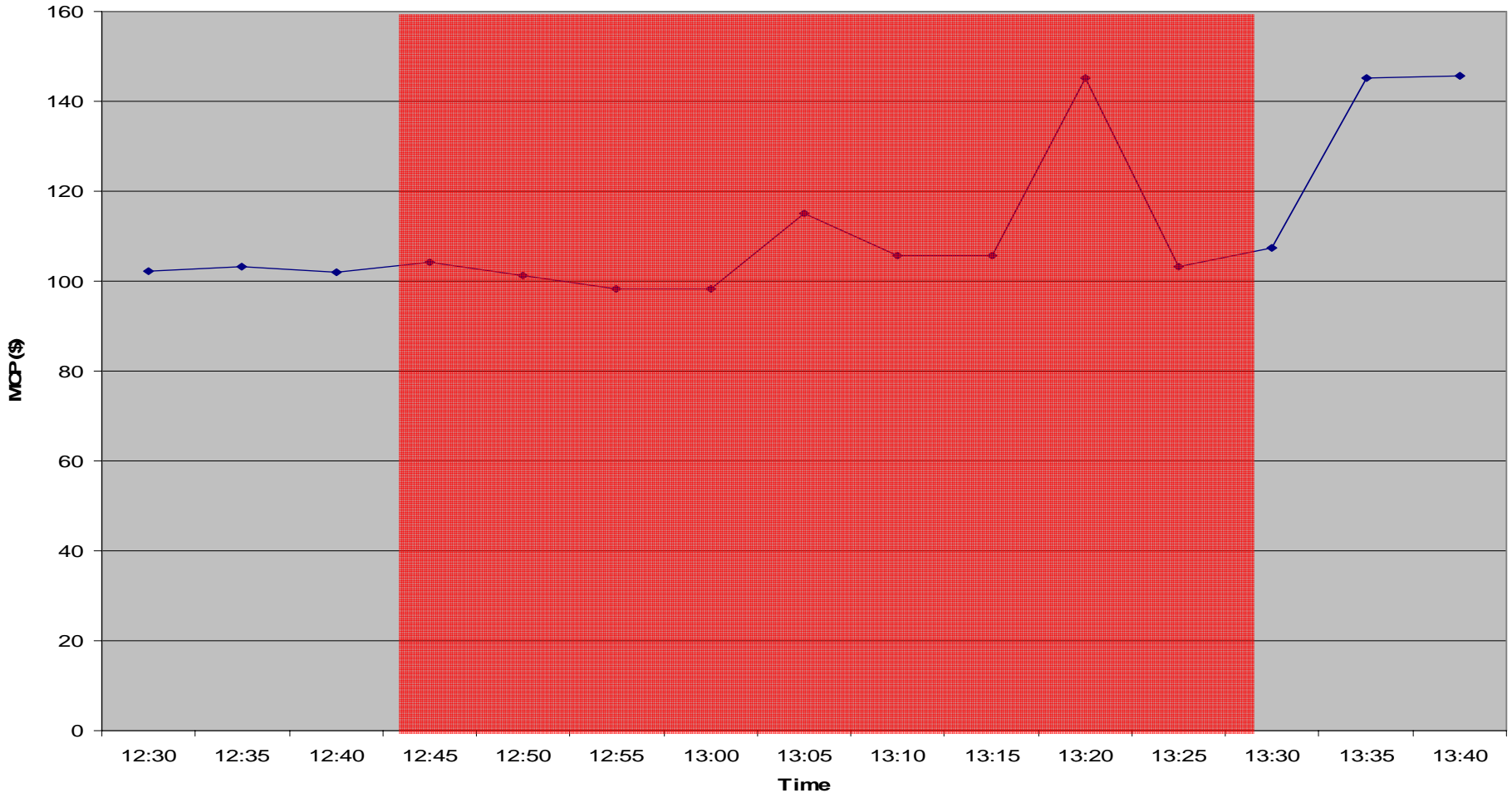
- 34 hours with OR activations
- Largest Reserve Activation occurred on June 29, 12:36
  - 500MW of OR and 500MW of SAR were activated
  - Result of forced outage on a large generating unit
  - OR was activated for 40 minutes

OR Timeline



- June 12 HE 13
  - At 12:42 a 500kV line tripped, resulting in a 774MW generation loss
  - At 12:43 a province wide 5% voltage reduction was issued (excluding Niagara due to circuit restrictions)
    - The reduction ended at 13:24 and voltages were restored by 13:29
  - Emergency Energy was purchased for hours 12 to 15
    - Concurrently demand was exceeding forecasts by approximately 1000 MW to 1400 MW
    - Emergency purchases totalled 1173 MW (300 MW for HE 12, 200 MW for HE 13 and 473MW for HE 14 and HE15 together)

**June 12 Voltage Reduction Timeline**



- No market demand response programs were used in June

- There were 2 in June where the HOEP was above \$200
- There were 67 hours where HOEP was less than \$20
- There were 34 OR activations