

*Table 1: % of Time CAOR was scheduled over the period August 6, 2003 to September 30, 2004*

	Pre-Dispatch			Real-Time Dispatch		
	10N	30R	Total	10N	30R	Total
<b>Constrained</b>	<b>8.1%</b>	<b>8.4%</b>	<b>12.3%</b>	<b>9.4%</b>	<b>7.6%</b>	<b>12.9%</b>
<b>Unconstrained</b>	<b>3.6%</b>	<b>4.8%</b>	<b>6.4%</b>	<b>2.3%</b>	<b>2.4%</b>	<b>3.9%</b>

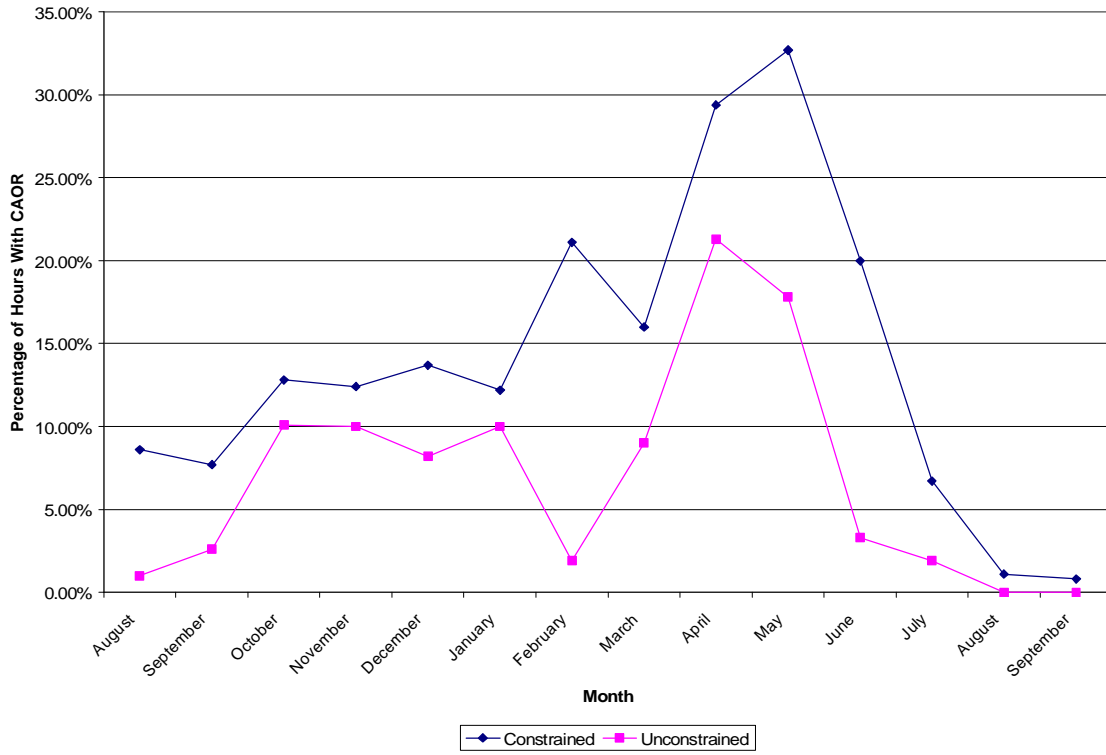
*Table 2: Use of CAOR on a Monthly Basis, % of Time Scheduled*

	Pre-Dispatch		Real-Time	
	Constrained	Unconstrained	Constrained	Unconstrained
<b>August</b>	<b>8.6%</b>	<b>1.0%</b>	<b>11.2%</b>	<b>2.3%</b>
<b>September</b>	<b>7.7%</b>	<b>2.6%</b>	<b>10.2%</b>	<b>2.7%</b>
<b>October</b>	<b>12.8%</b>	<b>10.1%</b>	<b>3.3%</b>	<b>0.4%</b>
<b>November</b>	<b>12.4%</b>	<b>10.0%</b>	<b>15.3%</b>	<b>6.2%</b>
<b>December</b>	<b>13.7%</b>	<b>8.2%</b>	<b>16.7%</b>	<b>7.4%</b>
<b>January</b>	<b>12.2%</b>	<b>10.0%</b>	<b>13.1%</b>	<b>5.1%</b>
<b>February</b>	<b>21.1%</b>	<b>1.9%</b>	<b>6.5%</b>	<b>1.1%</b>
<b>March</b>	<b>16.0%</b>	<b>9.0%</b>	<b>14.2%</b>	<b>4.8%</b>
<b>April</b>	<b>29.4%</b>	<b>21.3%</b>	<b>23.6%</b>	<b>10.0%</b>
<b>May</b>	<b>32.7%</b>	<b>17.8%</b>	<b>32.3%</b>	<b>8.9%</b>
<b>June</b>	<b>20.0%</b>	<b>3.3%</b>	<b>19.4%</b>	<b>2.7%</b>
<b>July</b>	<b>6.7%</b>	<b>1.9%</b>	<b>7.0%</b>	<b>2.3%</b>
<b>August</b>	<b>1.1%</b>	<b>0.0%</b>	<b>3.5%</b>	<b>0.1%</b>
<b>September</b>	<b>0.8%</b>	<b>0.0%</b>	<b>3.5%</b>	<b>0.1%</b>

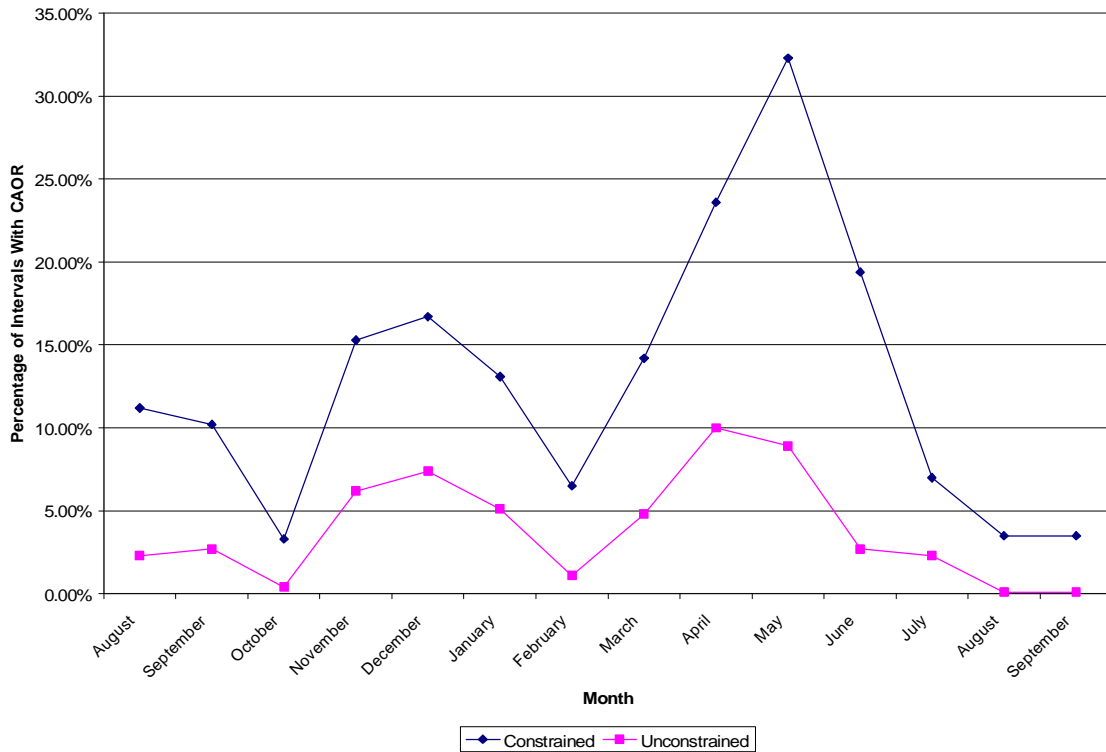
Notes:

1. Pre-dispatch is calculated as percentage of hours.
2. Real-time is calculated as percentage of intervals.
3. Starting from August 6, excluding the blackout period (August 14 thru August 22).

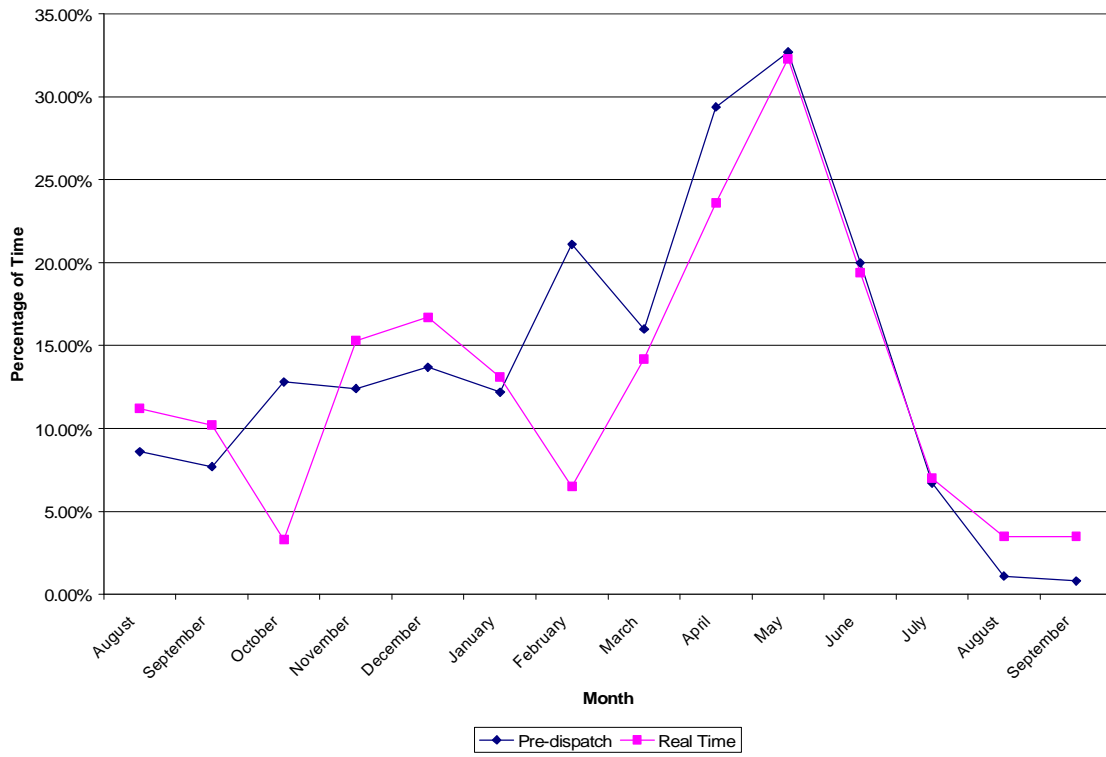
**Graph 1 Pre-dispatch Constrained vs. Unconstrained by Month**



**Graph 2 Real Time Constrained vs. Unconstrained by Month**



**Graph 3 Pre-dispatch vs. Real Time Constrained by Month**



**Graph 4 Pre-dispatch vs. Real Time Unconstrained by Month**

