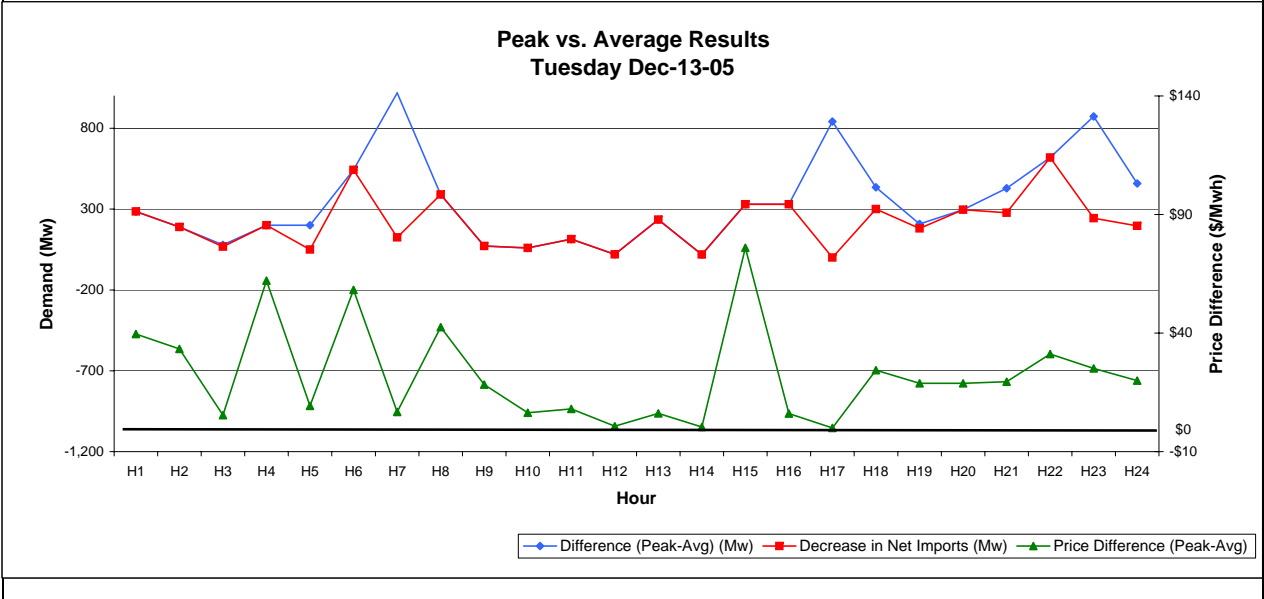
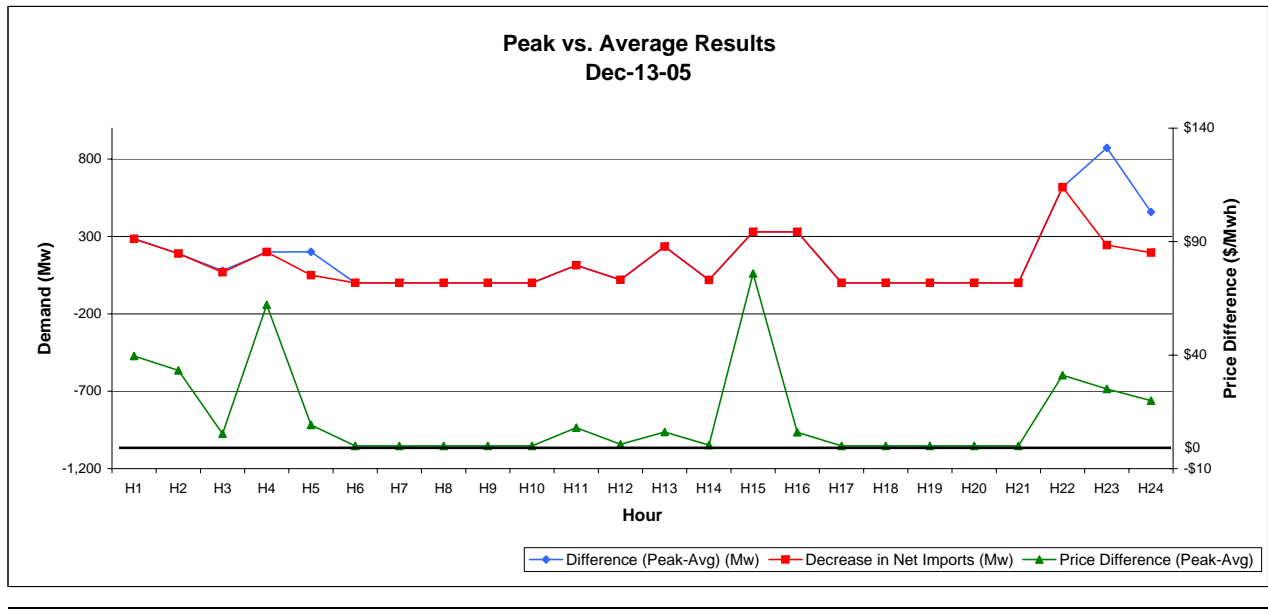


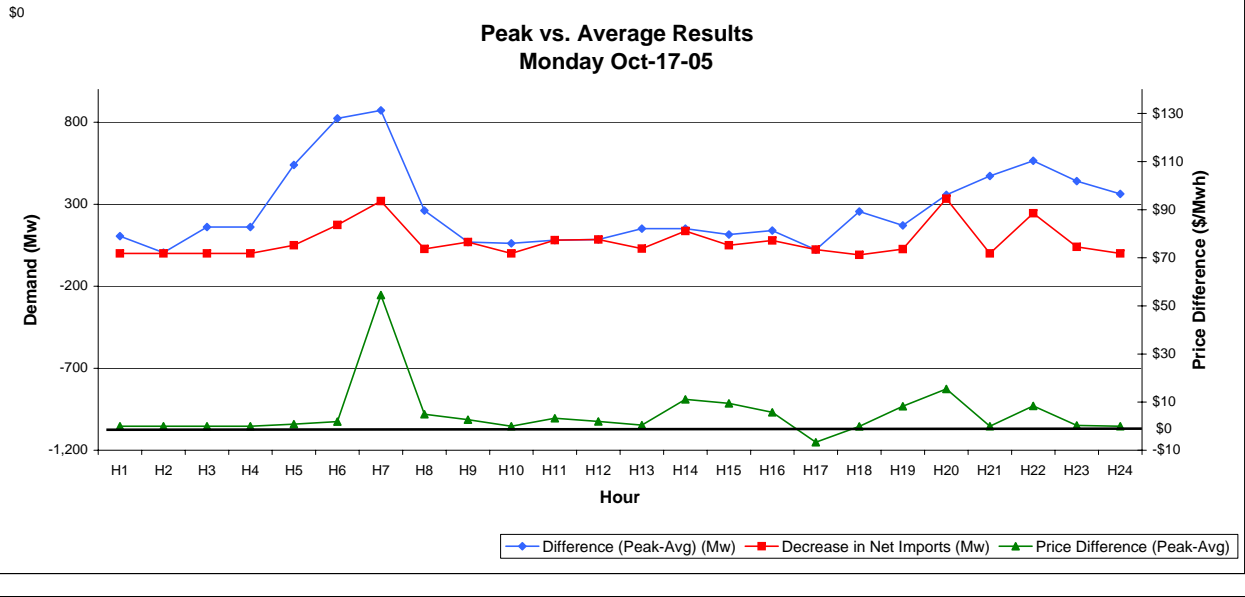
Average In All Hours								
Tuesday Dec 13-05	Avg Demand (Mw)	Peak Demand (Mw)	Difference (Peak-Avg) (Mw)	Decrease in Net Imports (Mw)	Simulated HOEP Peak Demand Forecast	Actual HOEP	Simulated HOEP Avg Demand Forecast	Price Difference (Peak-Avg)
H1	18,132	18,417	285	285	\$98	\$98	\$138	\$40
H2	17,658	17,848	189	189	\$105	\$90	\$139	\$33
H3	17,390	17,469	79	68	\$158	\$158	\$164	\$5
H4	17,111	17,311	200	200	\$92	\$92	\$154	\$62
H5	17,511	17,712	200	50	\$71	\$67	\$80	\$9
H6	18,254	18,797	543	543	\$102	\$102	\$160	\$58
H7	19,815	20,834	1,018	125	\$84	\$83	\$91	\$7
H8	21,223	21,613	390	390	\$146	\$146	\$189	\$43
H9	21,685	21,756	72	72	\$145	\$145	\$163	\$18
H10	21,689	21,749	60	60	\$59	\$60	\$66	\$6
H11	21,515	21,629	114	114	\$58	\$58	\$66	\$8
H12	21,381	21,401	20	20	\$56	\$56	\$57	\$1
H13	21,126	21,361	235	235	\$51	\$51	\$57	\$6
H14	20,872	20,890	19	19	\$58	\$58	\$58	\$0
H15	20,523	20,853	330	330	\$59	\$59	\$135	\$76
H16	21,183	21,513	330	330	\$48	\$48	\$54	\$6
H17	22,355	23,196	842	0	\$58	\$58	\$58	\$0
H18	23,631	24,066	435	300	\$146	\$146	\$170	\$24
H19	23,693	23,902	209	181	\$150	\$150	\$169	\$19
H20	23,188	23,484	296	296	\$151	\$151	\$170	\$19
H21	22,464	22,892	429	278	\$148	\$148	\$167	\$20
H22	21,416	22,035	619	619	\$153	\$155	\$184	\$31
H23	19,925	20,798	873	244	\$174	\$174	\$199	\$25
H24	18,593	19,051	459	196	\$101	\$101	\$121	\$20



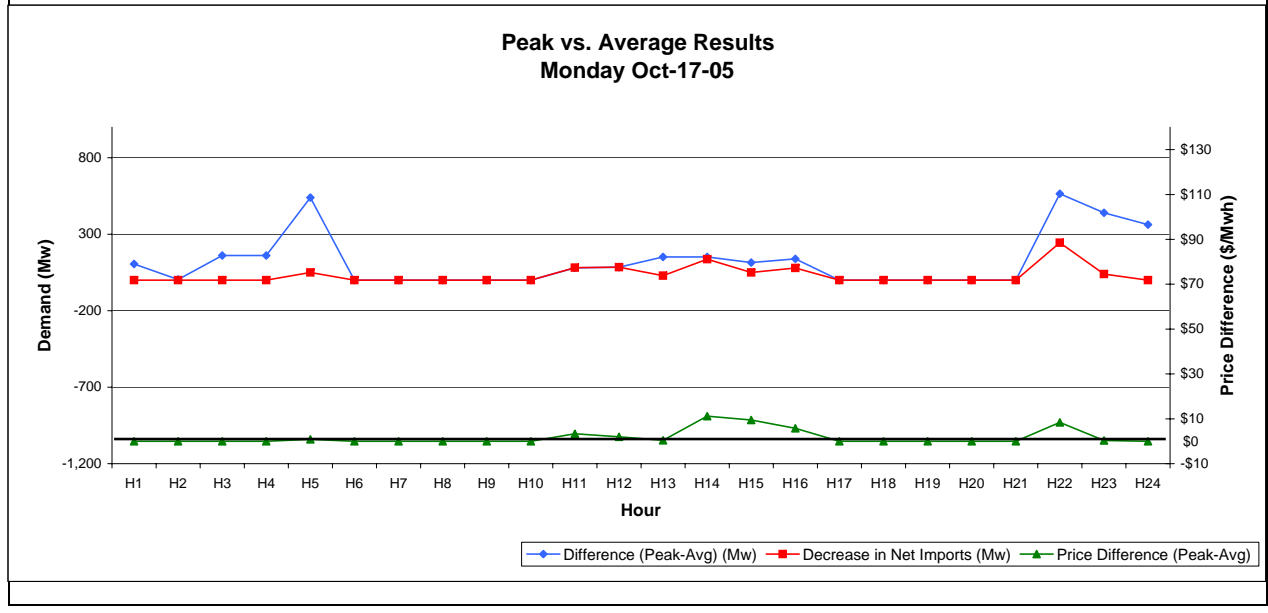
Average In Specific Hours Only								
Tuesday Dec 13-05	Avg Demand (Mw)	Peak Demand (Mw)	Difference (Peak-Avg) (Mw)	Decrease in Net Imports (Mw)	Simulated HOEP Peak Demand Forecast	Actual HOEP	Simulated HOEP Avg Demand Forecast	Price Difference (Peak-Avg)
H1	18,132	18,417	285	285	\$98	\$98	\$138	\$40
H2	17,658	17,848	189	189	\$105	\$90	\$139	\$33
H3	17,390	17,469	79	68	\$158	\$158	\$164	\$5
H4	17,111	17,311	200	200	\$92	\$92	\$154	\$62
H5	17,511	17,712	200	50	\$71	\$67	\$80	\$9
H6	0	18,797	0	0	\$102	\$102	N/A	\$0
H7	0	20,834	0	0	\$84	\$83	N/A	\$0
H8	0	21,613	0	0	\$146	\$146	N/A	\$0
H9	0	21,756	0	0	\$145	\$145	N/A	\$0
H10	0	21,749	0	0	\$59	\$60	N/A	\$0
H11	21,515	21,629	114	114	\$58	\$58	\$66	\$8
H12	21,381	21,401	20	20	\$56	\$56	\$57	\$1
H13	21,126	21,361	235	235	\$51	\$51	\$57	\$6
H14	20,872	20,890	19	19	\$58	\$58	\$58	\$0
H15	20,523	20,853	330	330	\$59	\$59	\$135	\$76
H16	21,183	21,513	330	330	\$48	\$48	\$54	\$6
H17	0	23,196	0	0	\$58	\$58	N/A	\$0
H18	0	24,066	0	0	\$146	\$146	N/A	\$0
H19	0	23,902	0	0	\$150	\$150	N/A	\$0
H20	0	23,484	0	0	\$151	\$151	N/A	\$0
H21	0	22,892	0	0	\$148	\$148	N/A	\$0
H22	21,416	22,035	619	619	\$153	\$155	\$184	\$31
H23	19,925	20,798	873	244	\$174	\$174	\$199	\$25
H24	18,593	19,051	459	196	\$101	\$101	\$121	\$20



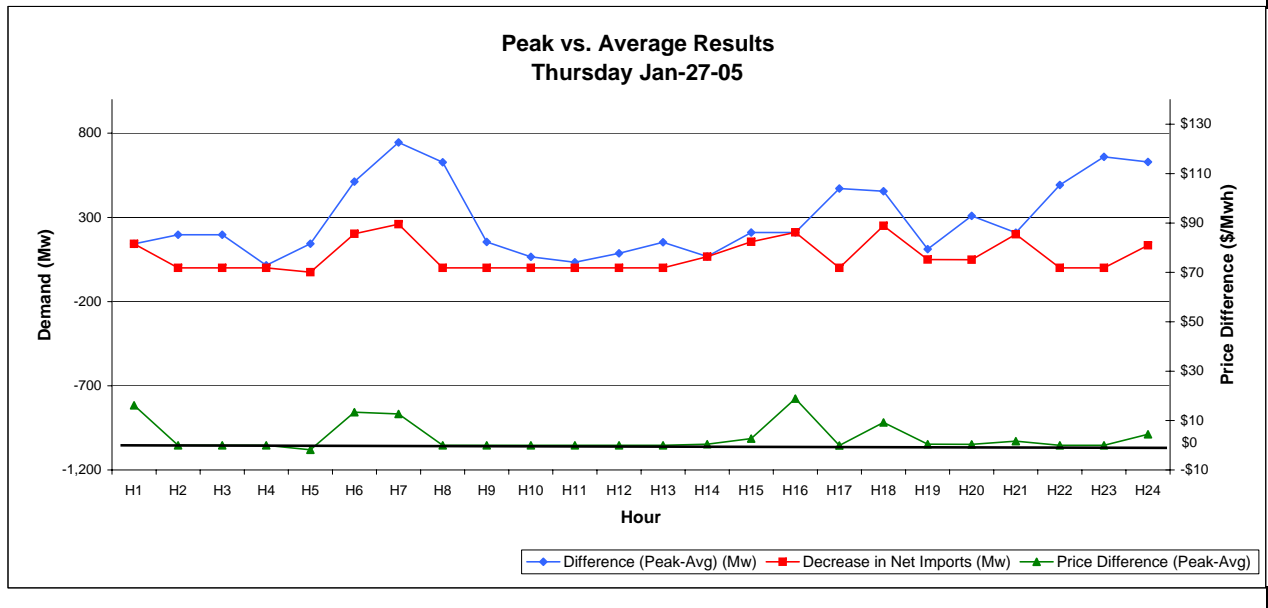
Average In All Hours								
Oct 17-05	Avg Demand (Mw)	Peak Demand (Mw)	Difference (Peak-Avg) (Mw)	Decrease in Net Imports (Mw)	Simulated HOEP Peak Demand Forecast	Actual HOEP	Simulated HOEP Avg Demand Forecast	Price Difference (Peak-Avg)
H1	13,018	13,124	106	0	\$43	\$43	\$43	\$0
H2	12,908	12,912	4	0	\$42	\$42	\$42	\$0
H3	12,743	12,903	161	0	\$37	\$37	\$37	\$0
H4	13,064	13,224	161	0	\$32	\$32	\$32	\$0
H5	13,764	14,304	540	50	\$39	\$39	\$40	\$1
H6	15,127	15,951	824	174	\$41	\$41	\$43	\$2
H7	16,823	17,696	873	319	\$95	\$95	\$150	\$55
H8	17,958	18,220	262	27	\$60	\$60	\$65	\$5
H9	18,289	18,358	69	69	\$116	\$116	\$118	\$3
H10	17,883	17,945	62	0	\$121	\$121	\$121	\$0
H11	17,741	17,822	81	81	\$124	\$124	\$127	\$3
H12	17,575	17,660	85	85	\$124	\$124	\$126	\$2
H13	17,339	17,490	152	29	\$130	\$130	\$130	\$0
H14	17,642	17,793	152	137	\$137	\$137	\$148	\$11
H15	17,909	18,024	116	50	\$87	\$97	\$96	\$9
H16	18,164	18,303	139	79	\$65	\$65	\$71	\$6
H17	18,326	18,349	23	23	\$103	\$109	\$96	-\$7
H18	18,604	18,859	255	-9	\$85	\$87	\$85	\$0
H19	19,029	19,200	170	26	\$105	\$106	\$113	\$8
H20	18,561	18,917	357	334	\$49	\$49	\$64	\$16
H21	17,731	18,204	473	0	\$66	\$66	\$66	\$0
H22	16,694	17,258	565	245	\$55	\$55	\$63	\$8
H23	15,688	16,129	441	40	\$40	\$40	\$40	\$0
H24	14,885	15,248	363	0	\$34	\$34	\$34	\$0



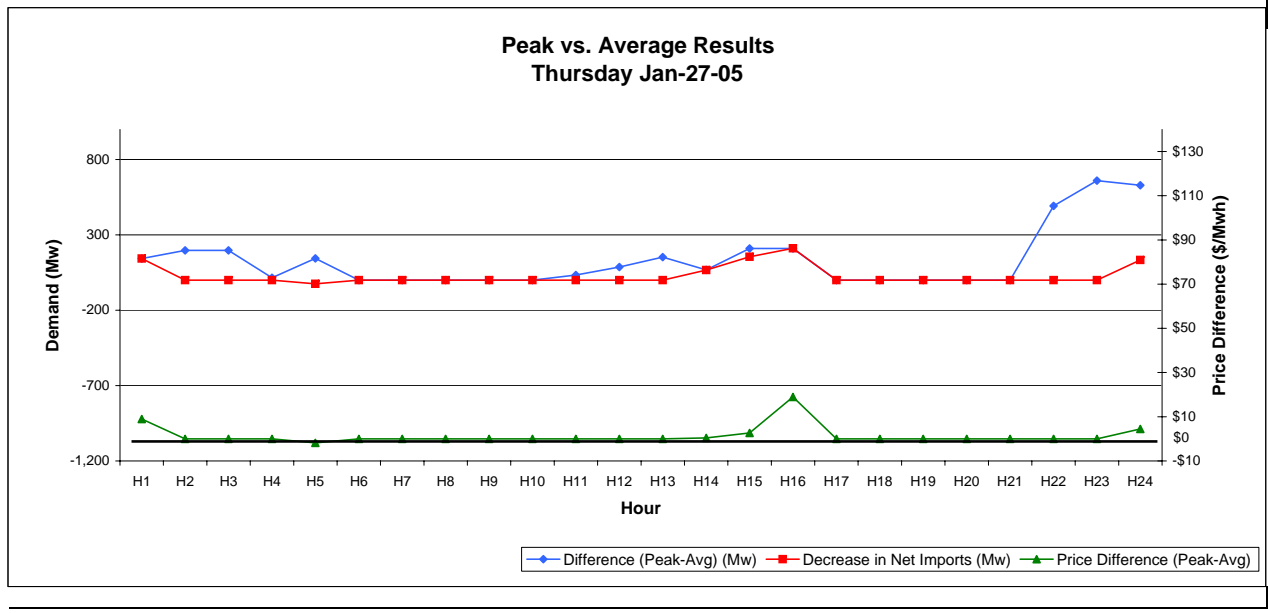
Average In Specific Hours Only								
Oct 17-05	Avg Demand (Mw)	Peak Demand (Mw)	Difference (Peak-Avg) (Mw)	Decrease in Net Imports (Mw)	Simulated HOEP Peak Demand Forecast	Actual HOEP	Simulated HOEP Avg Demand Forecast	Price Difference (Peak-Avg)
H1	13,018	13,124	106	0	\$43	\$43	\$43	\$0
H2	12,908	12,912	4	0	\$42	\$42	\$42	\$0
H3	12,743	12,903	161	0	\$37	\$37	\$37	\$0
H4	13,064	13,224	161	0	\$32	\$32	\$32	\$0
H5	13,764	14,304	540	50	\$39	\$39	\$40	\$1
H6	0	15,951	0	0	\$41	\$41	N/A	\$0
H7	0	17,696	0	0	\$95	\$95	N/A	\$0
H8	0	18,220	0	0	\$60	\$60	N/A	\$0
H9	0	18,358	0	0	\$116	\$116	N/A	\$0
H10	0	17,945	0	0	\$121	\$121	N/A	\$0
H11	17,741	17,822	81	81	\$124	\$124	\$127	\$3
H12	17,575	17,660	85	85	\$124	\$124	\$126	\$2
H13	17,339	17,490	152	29	\$130	\$130	\$130	\$0
H14	17,642	17,793	152	137	\$137	\$137	\$148	\$11
H15	17,909	18,024	116	50	\$87	\$97	\$96	\$9
H16	18,164	18,303	139	79	\$65	\$65	\$71	\$6
H17	0	18,349	0	0	\$103	\$109	N/A	\$0
H18	0	18,859	0	0	\$85	\$87	N/A	\$0
H19	0	19,200	0	0	\$105	\$106	N/A	\$0
H20	0	18,917	0	0	\$49	\$49	N/A	\$0
H21	0	18,204	0	0	\$66	\$66	N/A	\$0
H22	16,694	17,258	565	245	\$55	\$55	\$63	\$8
H23	15,688	16,129	441	40	\$40	\$40	\$40	\$0
H24	14,885	15,248	363	0	\$34	\$34	\$34	\$0



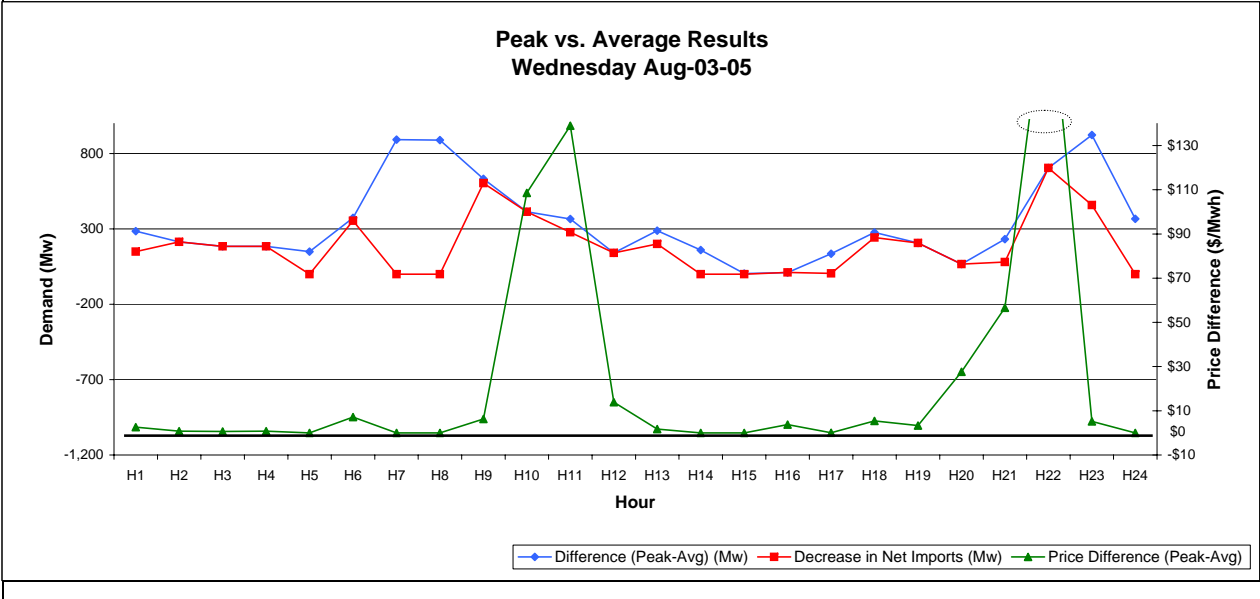
Average In All Hours								
Jan 27-05	Avg Demand (Mw)	Peak Demand (Mw)	Difference (Peak-Avg) (Mw)	Decrease in Net Imports (Mw)	Simulated HOEP Peak Demand Forecast	Actual HOEP	Simulated HOEP Avg Demand Forecast	Price Difference (Peak-Avg)
H1	19,291	19,433	143	143	\$76	\$76	\$92	\$16
H2	18,951	19,148	197	0	\$52	\$52	\$52	\$0
H3	18,557	18,754	197	0	\$68	\$68	\$68	\$0
H4	18,769	18,784	15	0	\$55	\$55	\$55	\$0
H5	18,928	19,072	144	-25	\$68	\$68	\$66	-\$2
H6	19,585	20,097	513	203	\$69	\$69	\$82	\$13
H7	20,843	21,589	746	260	\$73	\$73	\$86	\$13
H8	22,216	22,844	628	0	\$123	\$123	\$123	\$0
H9	22,998	23,152	154	0	\$132	\$132	\$132	\$0
H10	23,009	23,075	66	0	\$121	\$122	\$121	\$0
H11	22,909	22,943	34	0	\$120	\$121	\$120	\$0
H12	22,788	22,875	87	0	\$104	\$104	\$104	\$0
H13	22,549	22,701	153	0	\$90	\$89	\$90	\$0
H14	22,329	22,396	67	67	\$51	\$51	\$51	\$0
H15	22,051	22,261	211	155	\$51	\$51	\$54	\$3
H16	22,472	22,682	211	211	\$53	\$54	\$72	\$19
H17	23,154	23,625	471	0	\$68	\$68	\$68	\$0
H18	24,081	24,536	456	250	\$89	\$89	\$99	\$9
H19	24,648	24,759	111	50	\$99	\$99	\$99	\$0
H20	23,965	24,274	309	49	\$100	\$100	\$101	\$0
H21	23,447	23,656	209	200	\$112	\$112	\$114	\$2
H22	22,746	23,239	492	0	\$116	\$116	\$116	\$0
H23	21,594	22,254	660	0	\$81	\$81	\$81	\$0
H24	20,305	20,934	629	134	\$72	\$72	\$77	\$4



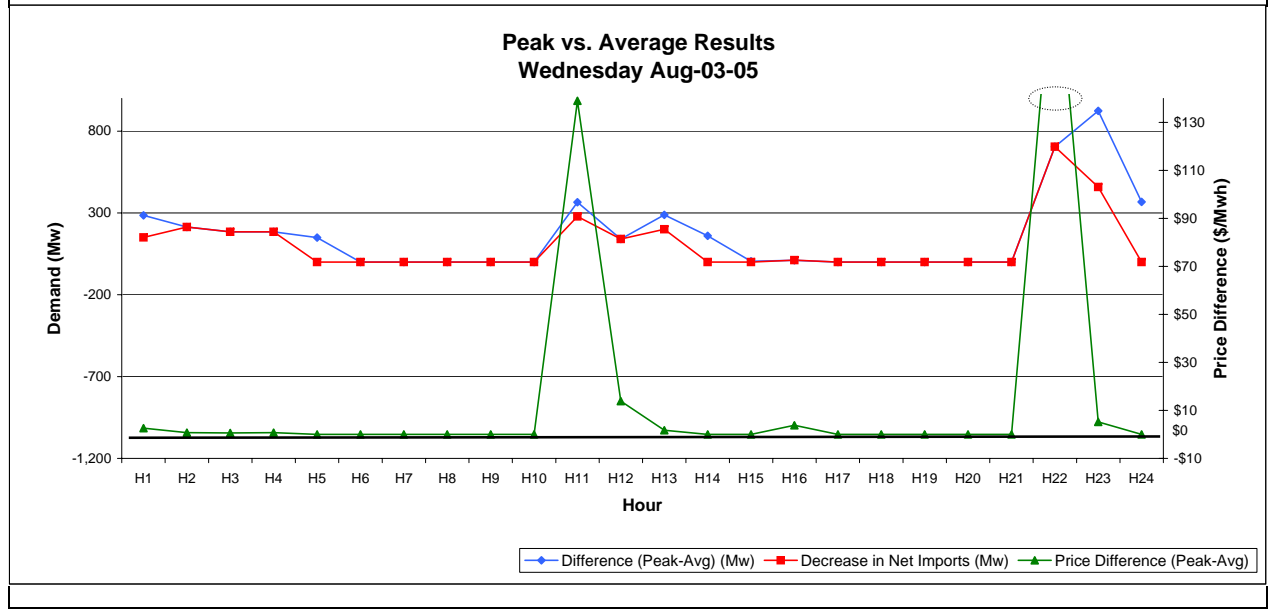
Average In Specific Hours Only								
Jan 27-05	Avg Demand (Mw)	Peak Demand (Mw)	Difference (Peak-Avg) (Mw)	Decrease in Net Imports (Mw)	Simulated HOEP Peak Demand Forecast	Actual HOEP	Simulated HOEP Avg Demand Forecast	Price Difference (Peak-Avg)
H1	19,291	19,433	143	143	\$76	\$76	\$92	\$9
H2	18,951	19,148	197	0	\$52	\$52	\$52	\$0
H3	18,557	18,754	197	0	\$68	\$68	\$68	\$0
H4	18,769	18,784	15	0	\$55	\$55	\$55	\$0
H5	18,928	19,072	144	-25	\$68	\$68	\$66	-\$2
H6	0	20,097	0	0	\$69	\$69	N/A	\$0
H7	0	21,589	0	0	\$73	\$73	N/A	\$0
H8	0	22,844	0	0	\$123	\$123	N/A	\$0
H9	0	23,152	0	0	\$132	\$132	N/A	\$0
H10	0	23,075	0	0	\$121	\$122	N/A	\$0
H11	22,909	22,943	34	0	\$120	\$121	\$120	\$0
H12	22,788	22,875	87	0	\$104	\$104	\$104	\$0
H13	22,549	22,701	153	0	\$90	\$89	\$90	\$0
H14	22,329	22,396	67	67	\$51	\$51	\$51	\$0
H15	22,051	22,261	211	155	\$51	\$51	\$54	\$3
H16	22,472	22,682	211	211	\$53	\$54	\$72	\$19
H17	0	23,625	0	0	\$68	\$68	N/A	\$0
H18	0	24,536	0	0	\$89	\$89	N/A	\$0
H19	0	24,759	0	0	\$99	\$99	N/A	\$0
H20	0	24,274	0	0	\$100	\$100	N/A	\$0
H21	0	23,656	0	0	\$112	\$112	N/A	\$0
H22	22,746	23,239	492	0	\$116	\$116	\$116	\$0
H23	21,594	22,254	660	0	\$81	\$81	\$81	\$0
H24	20,305	20,934	629	134	\$72	\$72	\$77	\$4



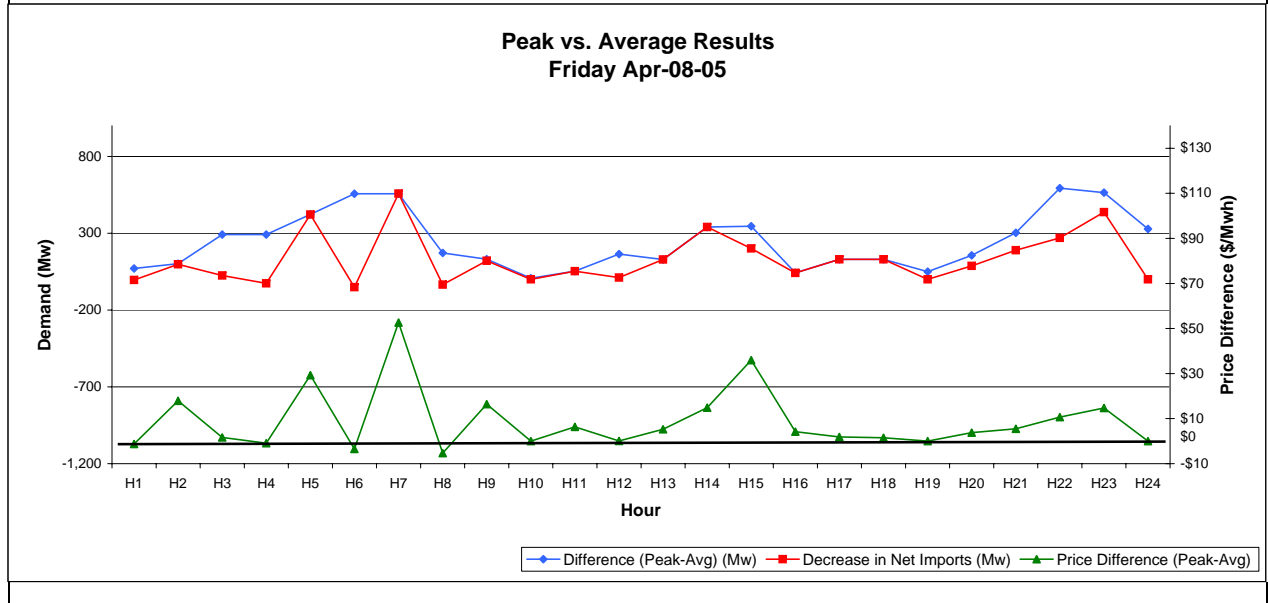
Average In All Hours								
Aug 03-05	Avg Demand (Mw)	Peak Demand (Mw)	Difference (Peak-Avg) (Mw)	Decrease in Net Imports (Mw)	Simulated HOEP Peak Demand Forecast	Actual HOEP	Simulated HOEP Avg Demand Forecast	Price Difference (Peak-Avg)
H1	17,880	18,165	285	150	\$91	\$91	\$94	\$3
H2	17,381	17,595	214	214	\$32	\$32	\$33	\$1
H3	16,982	17,167	185	185	\$32	\$32	\$32	\$1
H4	16,613	16,798	185	185	\$33	\$33	\$33	\$1
H5	16,947	17,096	149	0	\$33	\$33	\$33	\$0
H6	17,469	17,842	373	354	\$46	\$46	\$53	\$7
H7	18,735	19,628	893	0	\$96	\$96	\$96	\$0
H8	20,518	21,408	890	0	\$110	\$110	\$110	\$0
H9	22,040	22,672	632	604	\$111	\$111	\$118	\$6
H10	23,087	23,501	414	414	\$134	\$134	\$243	\$109
H11	23,867	24,232	366	278	\$262	\$262	\$401	\$139
H12	24,373	24,514	141	141	\$388	\$388	\$402	\$14
H13	24,803	25,091	289	200	\$113	\$113	\$115	\$2
H14	25,251	25,412	160	0	\$114	\$114	\$114	\$0
H15	25,114	25,118	4	0	\$124	\$124	\$124	\$0
H16	25,098	25,109	11	11	\$126	\$126	\$130	\$4
H17	24,952	25,087	136	5	\$143	\$143	\$143	\$0
H18	24,539	24,816	276	243	\$117	\$117	\$123	\$5
H19	24,056	24,263	207	207	\$116	\$116	\$119	\$3
H20	23,783	23,849	67	67	\$126	\$126	\$154	\$28
H21	23,483	23,716	233	80	\$260	\$260	\$316	\$57
H22	22,546	23,250	705	705	\$123	\$123	\$332	\$208
H23	20,917	21,841	924	458	\$103	\$103	\$108	\$5
H24	19,627	19,994	367	0	\$96	\$96	\$96	\$0



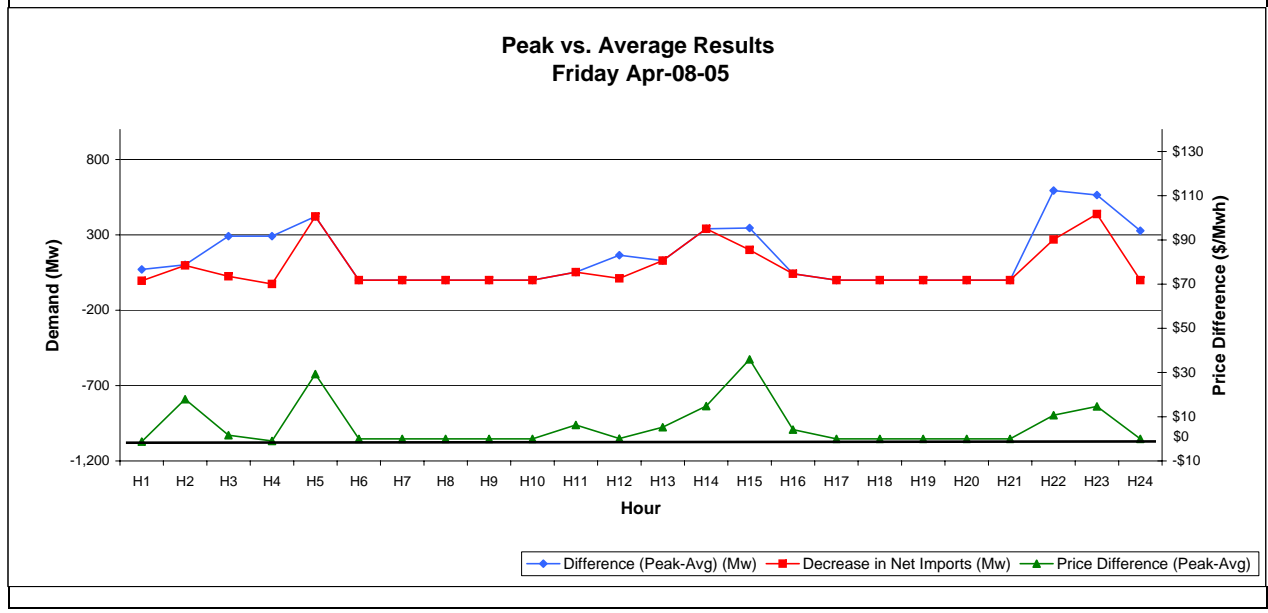
Average In Specific Hours Only								
Aug 03-05	Avg Demand (Mw)	Peak Demand (Mw)	Difference (Peak-Avg) (Mw)	Decrease in Net Imports (Mw)	Simulated HOEP Peak Demand Forecast	Actual HOEP	Simulated HOEP Avg Demand Forecast	Price Difference (Peak-Avg)
H1	17,880	18,165	285	150	\$91	\$91	\$94	\$3
H2	17,381	17,595	214	214	\$32	\$32	\$33	\$1
H3	16,982	17,167	185	185	\$32	\$32	\$32	\$1
H4	16,613	16,798	185	185	\$33	\$33	\$33	\$1
H5	16,947	17,096	149	0	\$33	\$33	\$33	\$0
H6	0	17,842	0	0	\$46	\$46	N/A	\$0
H7	0	19,628	0	0	\$96	\$96	N/A	\$0
H8	0	21,408	0	0	\$110	\$110	N/A	\$0
H9	0	22,672	0	0	\$111	\$111	N/A	\$0
H10	0	23,501	0	0	\$134	\$134	N/A	\$0
H11	23,867	24,232	366	278	\$262	\$262	\$401	\$139
H12	24,373	24,514	141	141	\$388	\$388	\$402	\$14
H13	24,803	25,091	289	200	\$113	\$113	\$115	\$2
H14	25,251	25,412	160	0	\$114	\$114	\$114	\$0
H15	25,114	25,118	4	0	\$124	\$124	\$124	\$0
H16	25,098	25,109	11	11	\$126	\$126	\$130	\$4
H17	0	25,087	0	0	\$143	\$143	N/A	\$0
H18	0	24,816	0	0	\$117	\$117	N/A	\$0
H19	0	24,263	0	0	\$116	\$116	N/A	\$0
H20	0	23,849	0	0	\$126	\$126	N/A	\$0
H21	0	23,716	0	0	\$260	\$260	N/A	\$0
H22	22,546	23,250	705	705	\$123	\$123	\$332	\$208
H23	20,917	21,841	924	458	\$103	\$103	\$108	\$5
H24	19,627	19,994	367	0	\$96	\$96	\$96	\$0



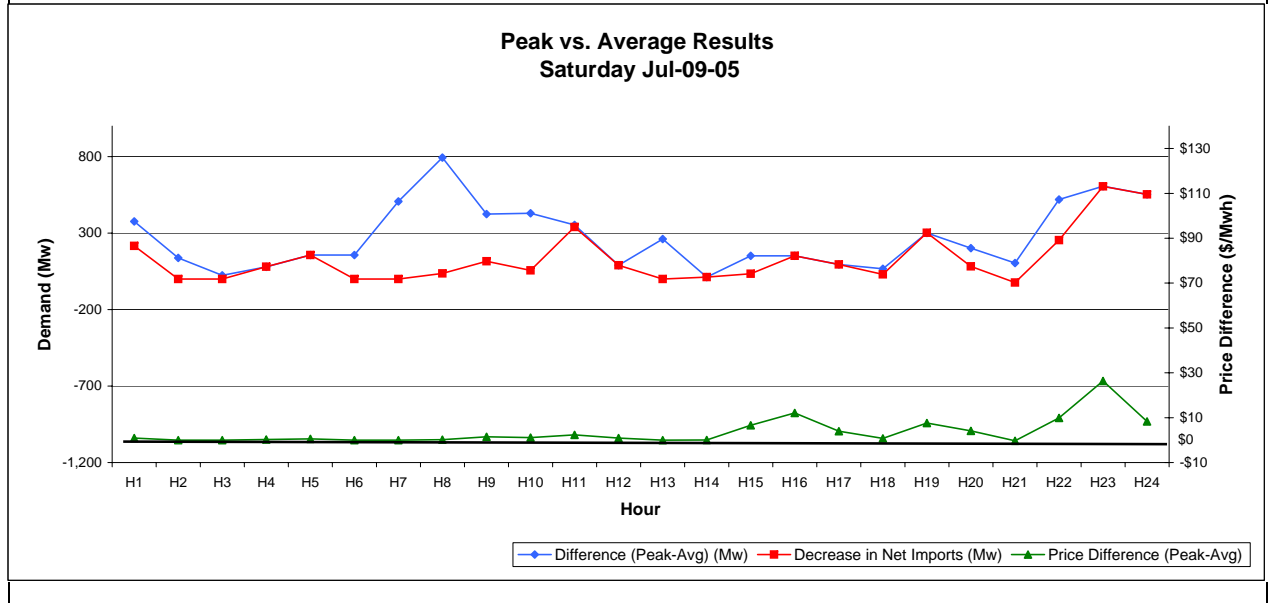
Average In All Hours								
Apr 08-05	Avg Demand (Mw)	Peak Demand (Mw)	Difference (Peak-Avg) (Mw)	Decrease in Net Imports (Mw)	Simulated HOEP Peak Demand Forecast	Actual HOEP	Simulated HOEP Avg Demand Forecast	Price Difference (Peak-Avg)
H1	14,738	14,809	71	-4	\$72	\$72	\$71	-\$1
H2	14,565	14,667	102	98	\$78	\$78	\$96	\$18
H3	14,171	14,463	292	25	\$63	\$68	\$64	\$2
H4	14,754	15,046	292	-26	\$55	\$54	\$54	-\$1
H5	15,468	15,890	422	422	\$51	\$51	\$80	\$29
H6	16,591	17,149	558	-51	\$49	\$49	\$45	-\$3
H7	17,707	18,264	558	558	\$52	\$52	\$105	\$53
H8	18,437	18,609	172	-34	\$88	\$88	\$83	-\$5
H9	18,740	18,871	131	121	\$66	\$67	\$83	\$16
H10	18,708	18,715	8	0	\$117	\$117	\$117	\$0
H11	18,647	18,700	53	53	\$44	\$50	\$51	\$6
H12	18,430	18,595	165	11	\$45	\$50	\$45	\$0
H13	18,136	18,265	129	129	\$51	\$51	\$56	\$5
H14	17,666	18,007	341	341	\$43	\$43	\$58	\$15
H15	16,979	17,325	346	201	\$76	\$82	\$112	\$36
H16	17,671	17,713	42	42	\$45	\$45	\$49	\$4
H17	17,498	17,628	130	130	\$42	\$42	\$44	\$2
H18	17,238	17,368	130	130	\$42	\$42	\$43	\$2
H19	17,418	17,468	50	0	\$42	\$42	\$42	\$0
H20	17,624	17,781	157	88	\$60	\$60	\$64	\$4
H21	17,463	17,766	303	190	\$51	\$51	\$56	\$5
H22	16,567	17,161	594	270	\$43	\$43	\$54	\$11
H23	15,408	15,973	565	438	\$47	\$47	\$62	\$15
H24	14,516	14,844	328	0	\$36	\$36	\$36	\$0



Average In Specific Hours Only								
Apr 08-05	Avg Demand (Mw)	Peak Demand (Mw)	Difference (Peak-Avg) (Mw)	Decrease in Net Imports (Mw)	Simulated HOEP Peak Demand Forecast	Actual HOEP	Simulated HOEP Avg Demand Forecast	Price Difference (Peak-Avg)
H1	14,738	14,809	71	-4	\$72	\$72	\$71	-\$1
H2	14,565	14,667	102	98	\$78	\$78	\$96	\$18
H3	14,171	14,463	292	25	\$63	\$68	\$64	\$2
H4	14,754	15,046	292	-26	\$55	\$54	\$54	-\$1
H5	15,468	15,890	422	422	\$51	\$51	\$80	\$29
H6	0	17,149	0	0	\$49	\$49	N/A	\$0
H7	0	18,264	0	0	\$52	\$52	N/A	\$0
H8	0	18,609	0	0	\$88	\$88	N/A	\$0
H9	0	18,871	0	0	\$66	\$67	N/A	\$0
H10	0	18,715	0	0	\$117	\$117	N/A	\$0
H11	18,647	18,700	53	53	\$44	\$50	\$51	\$6
H12	18,430	18,595	165	11	\$45	\$50	\$45	\$0
H13	18,136	18,265	129	129	\$51	\$51	\$56	\$5
H14	17,666	18,007	341	341	\$43	\$43	\$58	\$15
H15	16,979	17,325	346	201	\$76	\$82	\$112	\$36
H16	17,671	17,713	42	42	\$45	\$45	\$49	\$4
H17	0	17,628	0	0	\$42	\$42	N/A	\$0
H18	0	17,368	0	0	\$42	\$42	N/A	\$0
H19	0	17,468	0	0	\$42	\$42	N/A	\$0
H20	0	17,781	0	0	\$60	\$60	N/A	\$0
H21	0	17,766	0	0	\$51	\$51	N/A	\$0
H22	16,567	17,161	594	270	\$43	\$43	\$54	\$11
H23	15,408	15,973	565	438	\$47	\$47	\$62	\$15
H24	14,516	14,844	328	0	\$36	\$36	\$36	\$0



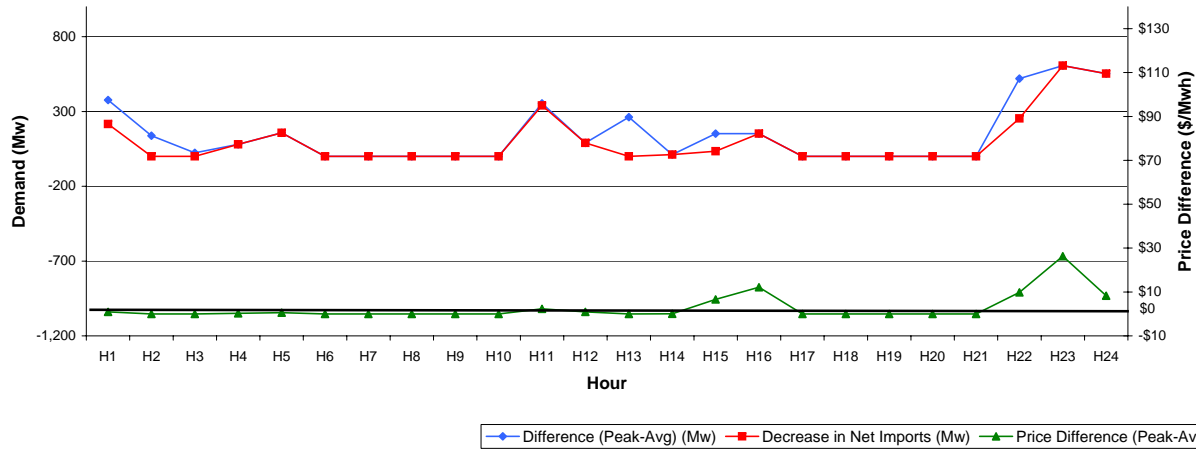
Average In All Hours								
Jul 09-05	Avg Demand (Mw)	Peak Demand (Mw)	Difference (Peak-Avg) (Mw)	Decrease in Net Imports (Mw)	Simulated HOEP Peak Demand Forecast	Actual HOEP	Simulated HOEP Avg Demand Forecast	Price Difference (Peak-Avg)
H1	14,571	14,948	377	216	\$33	\$33	\$34	\$1
H2	14,056	14,194	138	0	\$30	\$30	\$30	\$0
H3	13,895	13,919	24	0	\$28	\$28	\$28	\$0
H4	13,791	13,871	80	80	\$28	\$28	\$28	\$0
H5	13,554	13,711	157	157	\$28	\$28	\$28	\$1
H6	13,868	14,024	157	0	\$27	\$27	\$27	\$0
H7	14,532	15,039	508	0	\$31	\$30	\$31	\$0
H8	15,833	16,627	794	36	\$37	\$37	\$37	\$0
H9	17,051	17,475	424	116	\$39	\$39	\$41	\$1
H10	17,904	18,334	430	56	\$50	\$50	\$52	\$1
H11	18,688	19,042	354	340	\$38	\$38	\$40	\$2
H12	19,132	19,222	90	90	\$51	\$51	\$52	\$1
H13	18,614	18,876	262	0	\$69	\$69	\$69	\$0
H14	19,138	19,150	12	12	\$79	\$97	\$79	\$0
H15	18,974	19,126	152	34	\$105	\$103	\$111	\$7
H16	19,278	19,430	152	152	\$59	\$59	\$71	\$12
H17	19,525	19,620	95	95	\$53	\$53	\$57	\$4
H18	19,686	19,752	66	30	\$84	\$84	\$85	\$1
H19	19,411	19,713	302	302	\$57	\$57	\$64	\$8
H20	18,907	19,109	202	83	\$57	\$57	\$61	\$4
H21	18,601	18,706	104	-23	\$53	\$53	\$53	\$0
H22	17,978	18,497	519	254	\$52	\$52	\$62	\$10
H23	16,852	17,458	606	606	\$48	\$48	\$74	\$26
H24	15,693	16,246	553	553	\$51	\$51	\$60	\$8



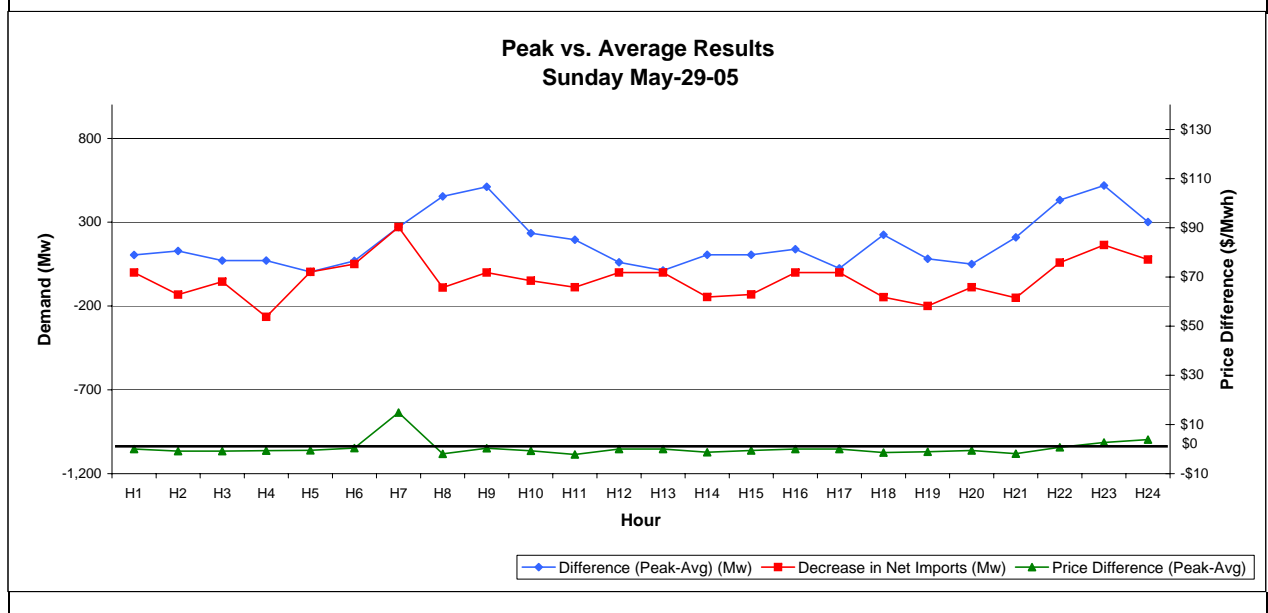
Average In Specific Hours Only

Jul 09-05	Avg Demand (Mw)	Peak Demand (Mw)	Difference (Peak-Avg) (Mw)	Decrease in Net Imports (Mw)	Simulated HOEP Peak Demand Forecast	Actual HOEP	Simulated HOEP Avg Demand Forecast	Price Difference (Peak-Avg)
H1	14,571	14,948	377	216	\$33	\$33	\$34	\$1
H2	14,056	14,194	138	0	\$30	\$30	\$30	\$0
H3	13,895	13,919	24	0	\$28	\$28	\$28	\$0
H4	13,791	13,871	80	80	\$28	\$28	\$28	\$0
H5	13,554	13,711	157	157	\$28	\$28	\$28	\$1
H6	0	14,024	0	0	\$27	\$27	N/A	\$0
H7	0	15,039	0	0	\$31	\$30	N/A	\$0
H8	0	16,627	0	0	\$37	\$37	N/A	\$0
H9	0	17,475	0	0	\$39	\$39	N/A	\$0
H10	0	18,334	0	0	\$50	\$50	N/A	\$0
H11	18,688	19,042	354	340	\$38	\$38	\$40	\$2
H12	19,132	19,222	90	90	\$51	\$51	\$52	\$1
H13	18,614	18,876	262	0	\$69	\$69	\$69	\$0
H14	19,138	19,150	12	12	\$79	\$97	\$79	\$0
H15	18,974	19,126	152	34	\$105	\$103	\$111	\$7
H16	19,278	19,430	152	152	\$59	\$59	\$71	\$12
H17	0	19,620	0	0	\$53	\$53	N/A	\$0
H18	0	19,752	0	0	\$84	\$84	N/A	\$0
H19	0	19,713	0	0	\$57	\$57	N/A	\$0
H20	0	19,109	0	0	\$57	\$57	N/A	\$0
H21	0	18,706	0	0	\$53	\$53	N/A	\$0
H22	17,978	18,497	519	254	\$52	\$52	\$62	\$10
H23	16,852	17,458	606	606	\$48	\$48	\$74	\$26
H24	15,693	16,246	553	553	\$51	\$51	\$60	\$8

**Peak vs. Average Results
Saturday Jul-09-05**



Average In All Hours								
May 29-05	Avg Demand (Mw)	Peak Demand (Mw)	Difference (Peak-Avg) (Mw)	Decrease in Net Imports (Mw)	Simulated HOEP Peak Demand Forecast	Actual HOEP	Simulated HOEP Avg Demand Forecast	Price Difference (Peak-Avg)
H1	12,686	12,790	104	0	\$20	\$20	\$20	\$0
H2	12,453	12,582	128	-132	\$20	\$19	\$19	-\$1
H3	12,253	12,325	71	-55	\$20	\$19	\$19	-\$1
H4	12,110	12,182	71	-265	\$19	\$19	\$19	-\$1
H5	12,186	12,190	4	4	\$17	\$17	\$17	-\$1
H6	12,260	12,329	70	50	\$19	\$18	\$19	\$0
H7	12,600	12,871	271	271	\$24	\$24	\$39	\$15
H8	13,325	13,779	454	-90	\$32	\$31	\$30	-\$2
H9	14,291	14,802	512	0	\$42	\$43	\$42	\$0
H10	15,037	15,271	234	-49	\$47	\$46	\$46	-\$1
H11	15,467	15,662	196	-88	\$44	\$43	\$42	-\$2
H12	15,546	15,607	61	0	\$47	\$47	\$47	\$0
H13	15,473	15,485	12	0	\$46	\$46	\$46	\$0
H14	15,354	15,461	106	-146	\$40	\$40	\$38	-\$1
H15	15,567	15,673	106	-131	\$34	\$34	\$33	-\$1
H16	15,812	15,950	139	0	\$36	\$37	\$36	\$0
H17	15,975	16,000	25	0	\$38	\$38	\$38	\$0
H18	15,525	15,750	225	-147	\$37	\$37	\$36	-\$1
H19	15,832	15,914	82	-200	\$35	\$36	\$34	-\$1
H20	15,964	16,014	50	-88	\$35	\$35	\$35	-\$1
H21	16,224	16,434	210	-151	\$39	\$39	\$37	-\$2
H22	15,393	15,825	432	59	\$41	\$41	\$42	\$1
H23	14,442	14,961	519	164	\$23	\$23	\$26	\$3
H24	13,622	13,923	301	77	\$21	\$19	\$24	\$4



Average In Specific Hours Only								
May 29-05	Avg Demand (Mw)	Peak Demand (Mw)	Difference (Peak-Avg) (Mw)	Decrease in Net Imports (Mw)	Simulated HOEP Peak Demand Forecast	Actual HOEP	Simulated HOEP Avg Demand Forecast	Price Difference (Peak-Avg)
H1	12,686	12,790	104	0	\$20	\$20	\$20	\$0
H2	12,453	12,582	128	-132	\$20	\$19	\$19	-\$1
H3	12,253	12,325	71	-55	\$20	\$19	\$19	-\$1
H4	12,110	12,182	71	-265	\$19	\$19	\$19	-\$1
H5	12,186	12,190	4	4	\$17	\$17	\$17	-\$1
H6	0	12,329	0	0	\$19	\$18	N/A	\$0
H7	0	12,871	0	0	\$24	\$24	N/A	\$0
H8	0	13,779	0	0	\$32	\$31	N/A	\$0
H9	0	14,802	0	0	\$42	\$43	N/A	\$0
H10	0	15,271	0	0	\$47	\$46	N/A	\$0
H11	15,467	15,662	196	-88	\$44	\$43	\$42	-\$2
H12	15,546	15,607	61	0	\$47	\$47	\$47	\$0
H13	15,473	15,485	12	0	\$46	\$46	\$46	\$0
H14	15,354	15,461	106	-146	\$40	\$40	\$38	-\$1
H15	15,567	15,673	106	-131	\$34	\$34	\$33	-\$1
H16	15,812	15,950	139	0	\$36	\$37	\$36	\$0
H17	0	16,000	0	0	\$38	\$38	N/A	\$0
H18	0	15,750	0	0	\$37	\$37	N/A	\$0
H19	0	15,914	0	0	\$35	\$36	N/A	\$0
H20	0	16,014	0	0	\$35	\$35	N/A	\$0
H21	0	16,434	0	0	\$39	\$39	N/A	\$0
H22	15,393	15,825	432	59	\$41	\$41	\$42	\$1
H23	14,442	14,961	519	164	\$23	\$23	\$26	\$3
H24	13,622	13,923	301	77	\$21	\$19	\$24	\$4

