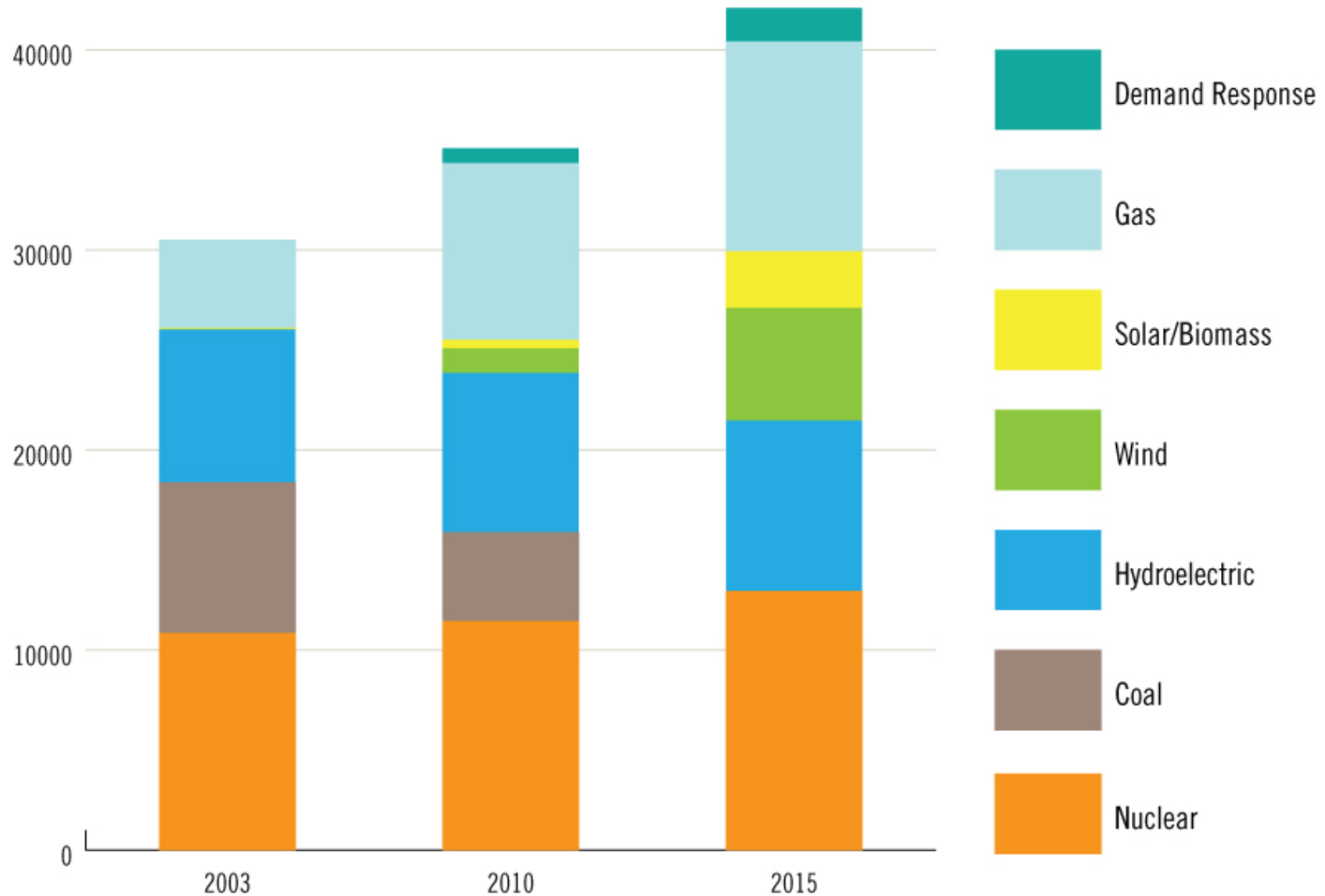


# Renewable Integration

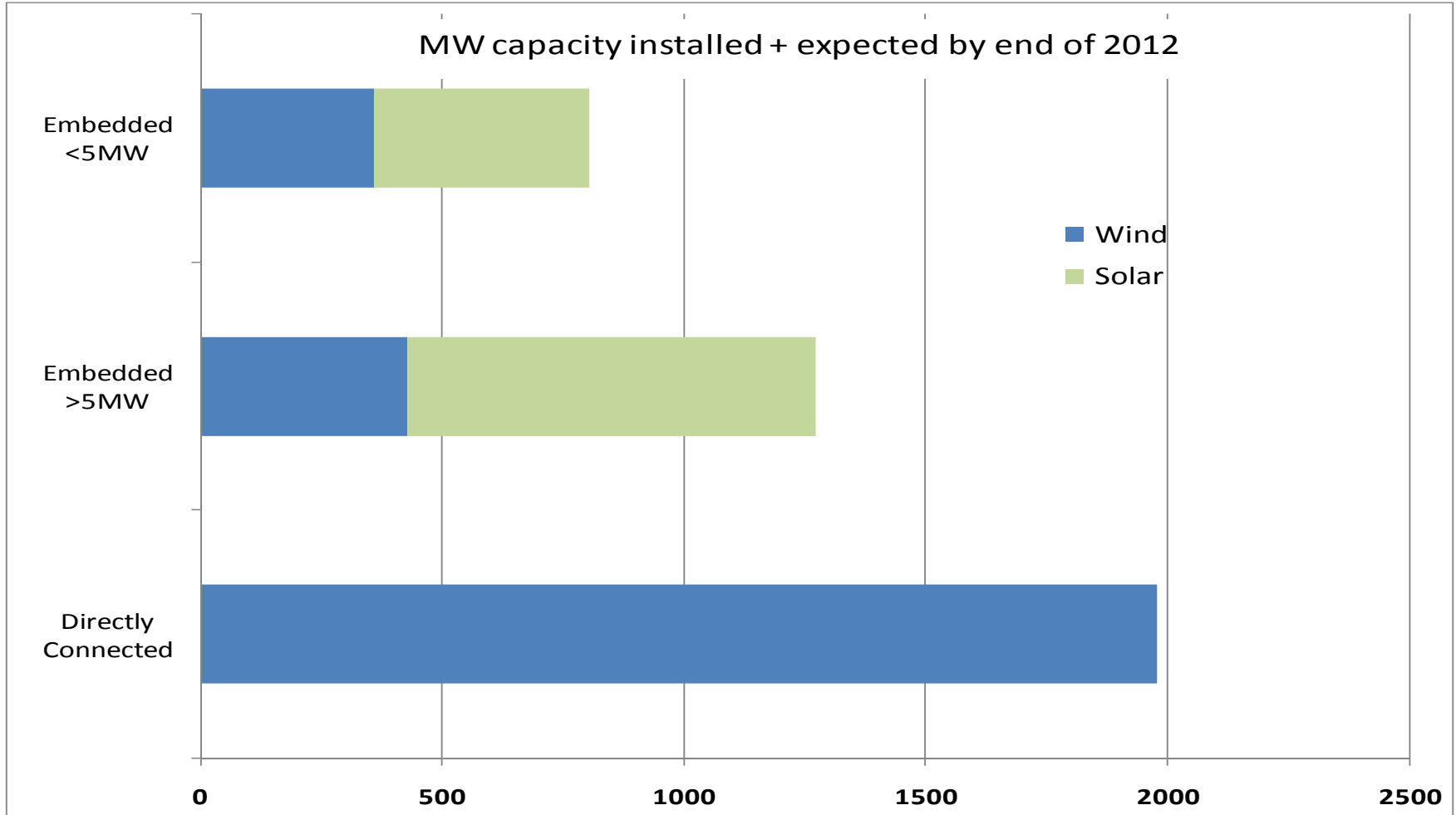
Candice Trickey  
Manager, Customer & Stakeholder Relations  
October 13, 2011



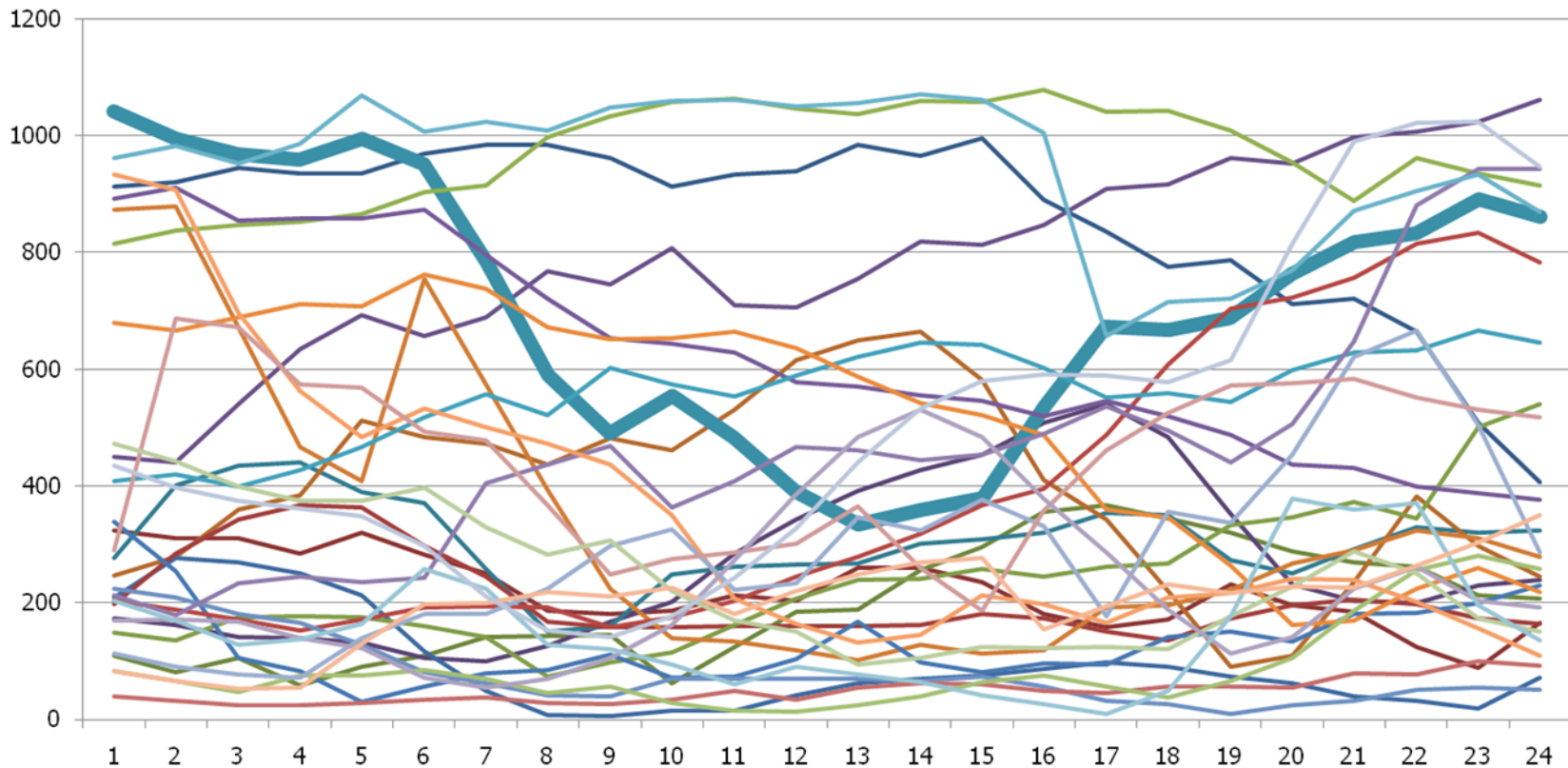
# A Changing Fuel Mix Installed Capacity



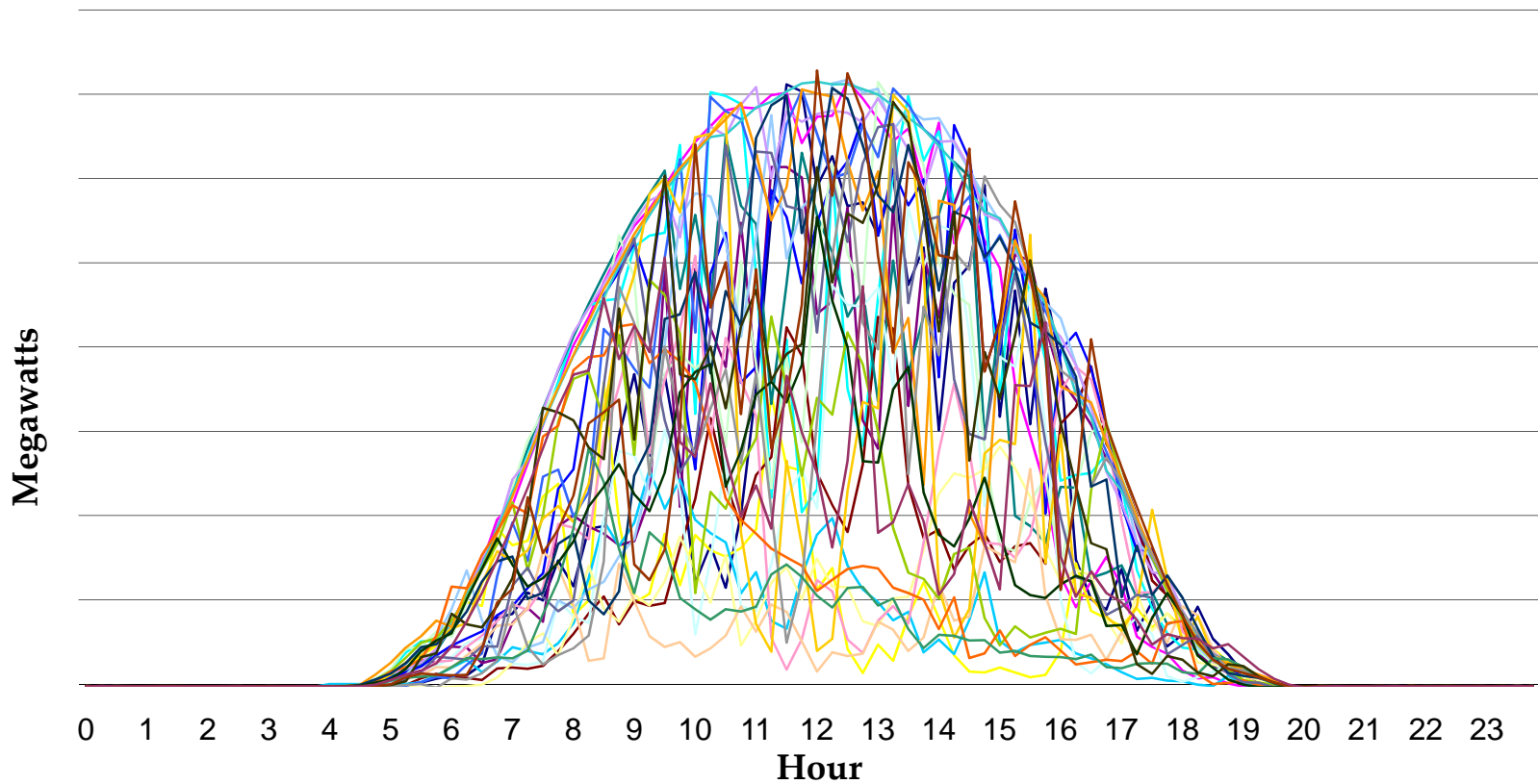
# New Wind and Solar: Projections for 2012



May 2011 Wind Output



## Summer Month



- The IESO will have access to plant specific data from wind and solar facilities
  - 5 MW and greater on the distribution system
  - Static and dynamic data requirements
- The IESO will implement a centralized forecasting system for wind and solar facilities
  - 5 MW and greater
  - Solar and wind forecasting requirements were just developed by the Visibility Technical Working Group
- The IESO will dispatch wind and solar facilities participating in the IESO Administered markets